

Manual Encoder EEV 80

Manual pulse generator, protection IP 65, resolution up to 10.000 pulses / revolution

Resolution

Resolution (Pulses/Revolution):

1 - 6000	7000	7200	7500
8000	8192	9000	9144
10000			

Type explanation

EEV 80-6-9000-30-P-RC12

Encoder type	Incremental
Flange diameter	ø 65 mm
Case diameter	ø 57 mm
Number of channels	3 = A + B + M 6 = AA + BB + MM
Resolutions	xxxx = Impulse pro Umdrehung
Supply voltage	05 = 5 VDC ± 5% 30 = 10 .. 30 VDC
Output driver	D-RS422
Position of connection	P R S
Connector	C07 = 7 pins Binder C12 = 12 pins M23 M10 = 10 pins MIL

Technical data

Mechanical data

Torque	≈ 18 Ncm
shaft loading	10 N radial 10 N axial
Weight	≤ 0,8 kg

Environmental conditions

Vibration	100 ms ⁻² (20 .. 2000 Hz)
Shock	1000 ms ⁻² (11 ms)
Operating temperature	-0 ... +80°C
Atmospheric humidity	≤ 85% r.h.
Protection class	IP 65

Cable 3 channels

Wire colour	Signal
Brown	+Vcc
Grey	0 V GND
Green	Signal A
White	Signal B
Yellow	Signal M
Shield	N.C.

Cable 6 channels

Wire colour	Signal
Brown 0,5 mm ²	+Vcc
Blue	+Vcc Sense ¹⁾
White 0,5 mm ²	0 V GND
White	0 V Sense
Brown	Signal A+
Green	Signal A-
Grey	Signal B+
Pink	Signal B-
Red	Signal M+
Black	Signal M-
Shield	N.C.

1) nur bei Vcc = 5 VDC TTL

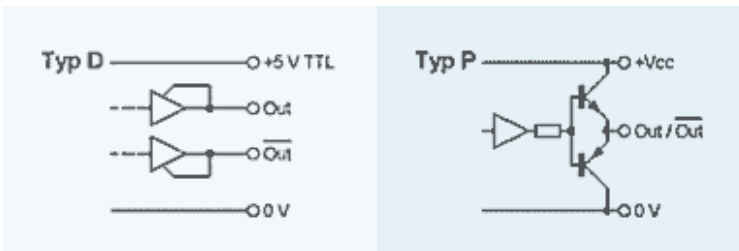
Connector 12 pins M23

Connection	Signal
Pin 1	Signal B- ¹⁾
Pin 2	+Vcc Sense ²⁾
Pin 3	Signal M+
Pin 4	Signal M- ¹⁾
Pin 5	Signal A+
Pin 6	Signal A- ¹⁾
Pin 7	N.C.
Pin 8	Signal B+
Pin 9	Shield
Pin 10	0 V GND
Pin 11	0 V Sense
Pin 12	+Vcc

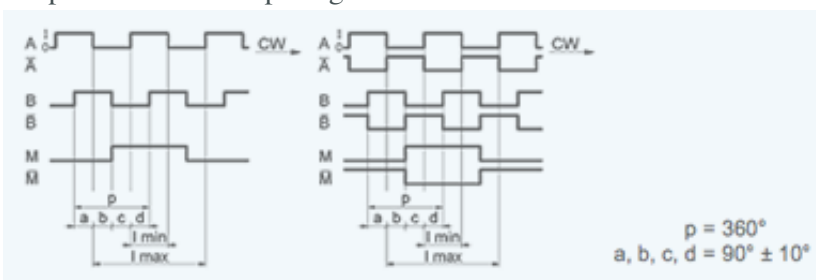
1) nur bei 6 Ausgangskanälen

2) nur bei Vcc = 5 VDC TTL

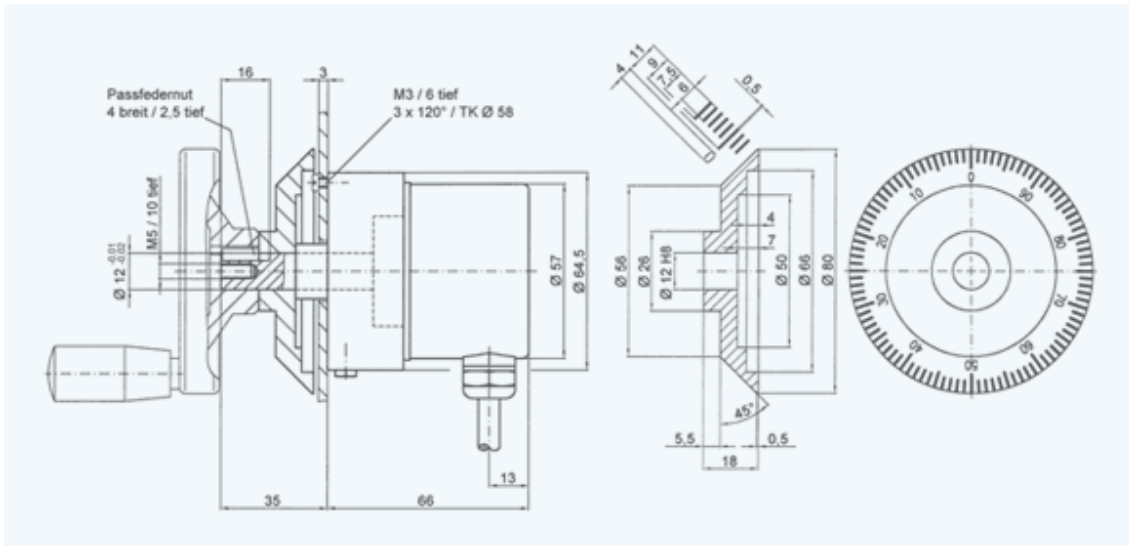
Output driver



Output channels / Output signals



Outline drawing



Version E 528-211 · Subject to change

INDUcoder® · INDUcoder Messtechnik GmbH, Kaiserstraße 316, 47178 Duisburg, Deutschland
Tel: (0203) 57047-0, Fax: (0203) 57047-20, E-Mail: info@inducoder.de, Internet: www.inducoder.de