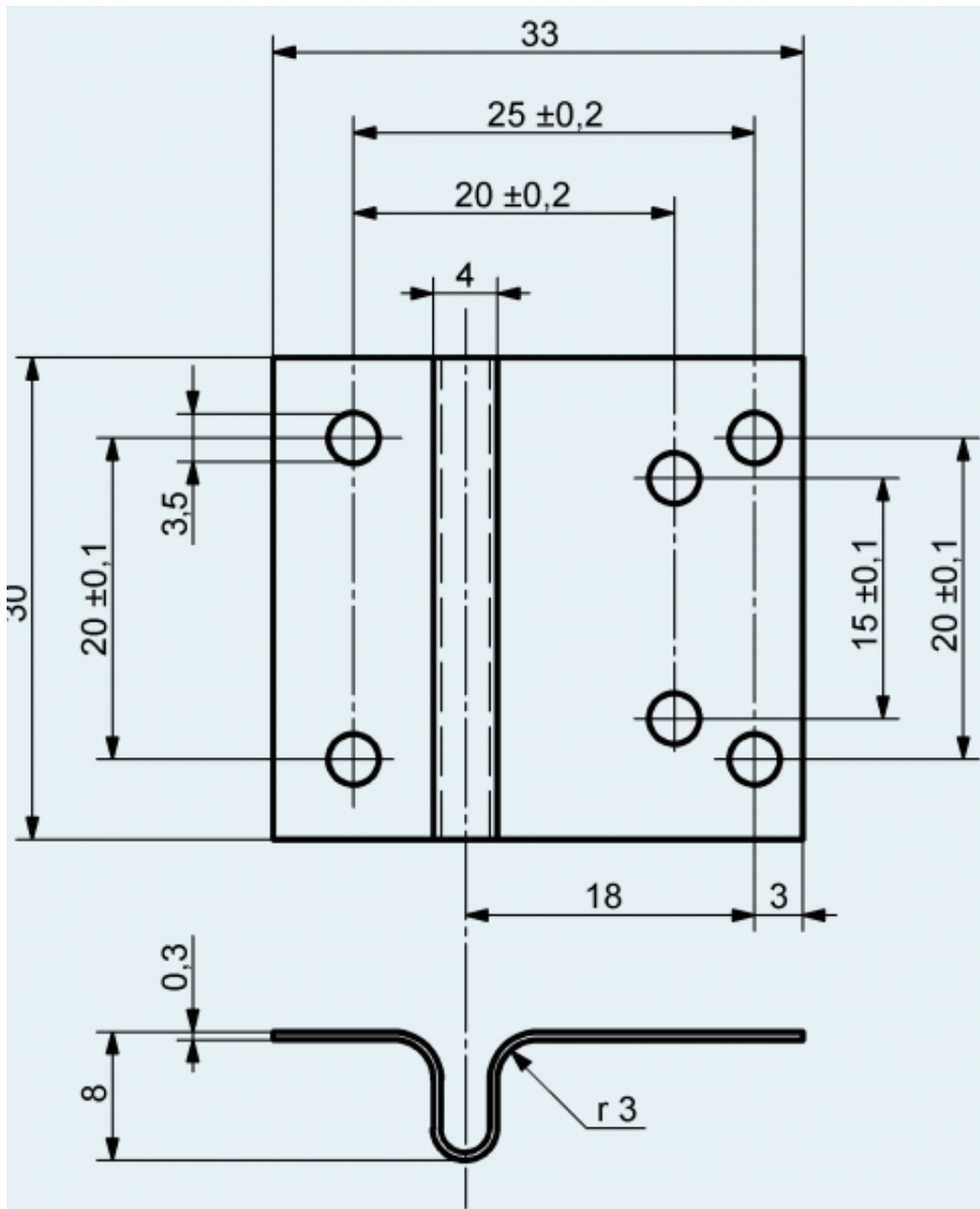


Flexible spring mountings

A flexible spring mounting is required for mounting a hollow shaft encoder, as the driving shaft and the hollow shaft of the encoder are rigidly coupled. The flexible spring mounting will be used for coupling the encoder flange to a fixed component. The special shape of the spring mounting assures the accurate transmission of rotational movement from driving shaft to hollow shaft of the encoder. Axial, radial and angular displacements will be substrained.



Flexible Spring Mounting for EDH 75, EDH 751, EDH 76, EDH 761